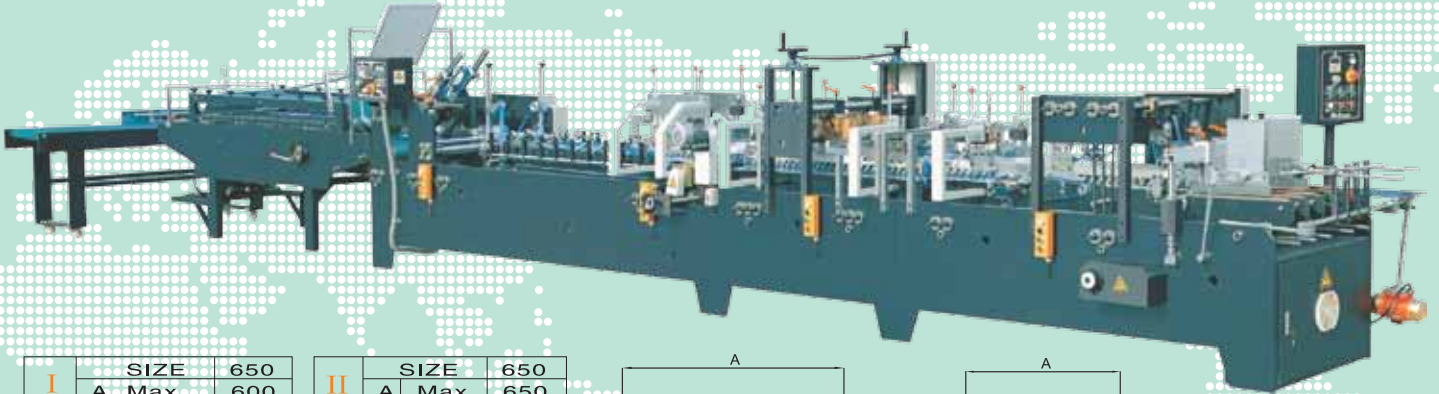


# CZH-GD650

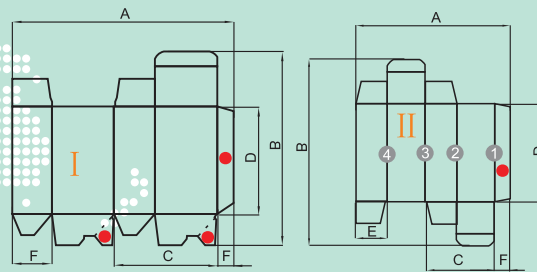
## High-speed Automatic Folder Gluer For Lock-bottom Paper Box

This machine can handle paper boxes requiring three-point (lock bottom) or one point (side gluing) gluing with pre-folding and edge-polishing mechanism, suitable for many kinds of paper boxes. It has the features of convenient simple adjustment and operation and is an ideal equipment for packaging factories.



I Crash Lock Bottom Boxes	SIZE	650
	A Max.	600
	Min.	180
	B Max.	550
	Min.	90
	C Max.	290
	Min.	80
D Max.	450	
Min.	60	
E Max.	140	
Min.	10	
F Max.	20	
Min.	6	

II Side Gluing Boxes	SIZE	650
	A Max.	650
	Min.	75
	B Max.	700
	Min.	80
	C Max.	300
	Min.	34
D Max.	600	
Min.	50	
E Max.	150	
Min.	10	
F Max.	20	
Min.	6	

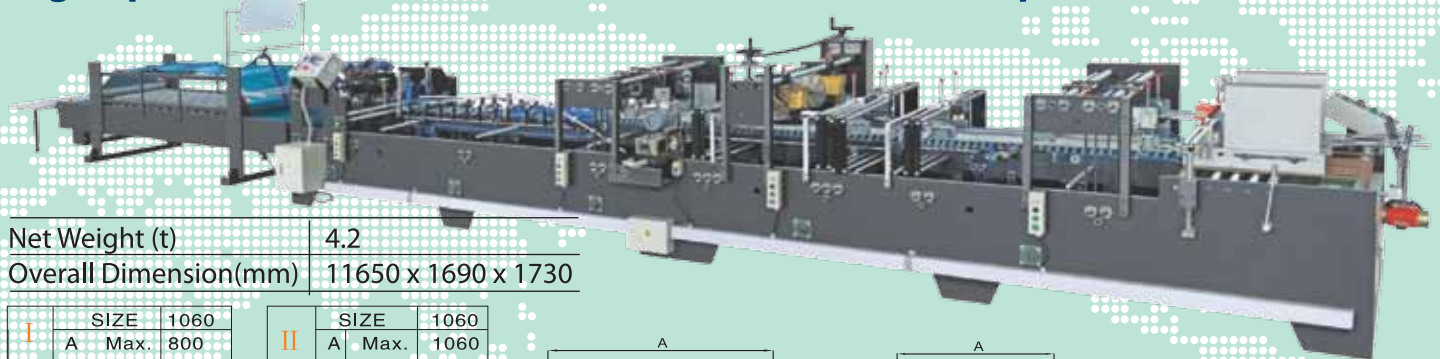


● is gluing point

Functions	Side gluing :135° pre-folding for No.1 line Lock bottom 90° pre-folding for No.3 line
Paper Weight	200-700g
Speed Range	side gluing 0-200m/min crash lock bottom 0-100m/min
Total Power (kw)	11
Net Weight (t)	2.8
Overall Dimension(mm)	9800 x 1230 x 2100

# CZH-GD1060

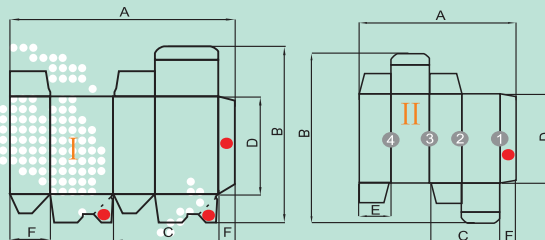
## High-speed Automatic Folder Gluer For Lock-bottom Paper Box



Net Weight (t)	4.2
Overall Dimension(mm)	11650 x 1690 x 1730

I Crash Lock Bottom Boxes	SIZE	1060
	A Max.	800
	Min.	250
	B Max.	650
	Min.	90
	C Max.	515
	Min.	90
D Max.	600	
Min.	90	
E Max.	260	
Min.	30	
F Max.	30	
Min.	10	

II Side Gluing Boxes	SIZE	1060
	A Max.	1060
	Min.	200
	B Max.	650
	Min.	100
	C Max.	530
	Min.	60
D Max.	750	
Min.	90	
E Max.	270	
Min.	30	
F Max.	20	
Min.	10	



● is gluing point